

'89 MAY 15 AM 10 26

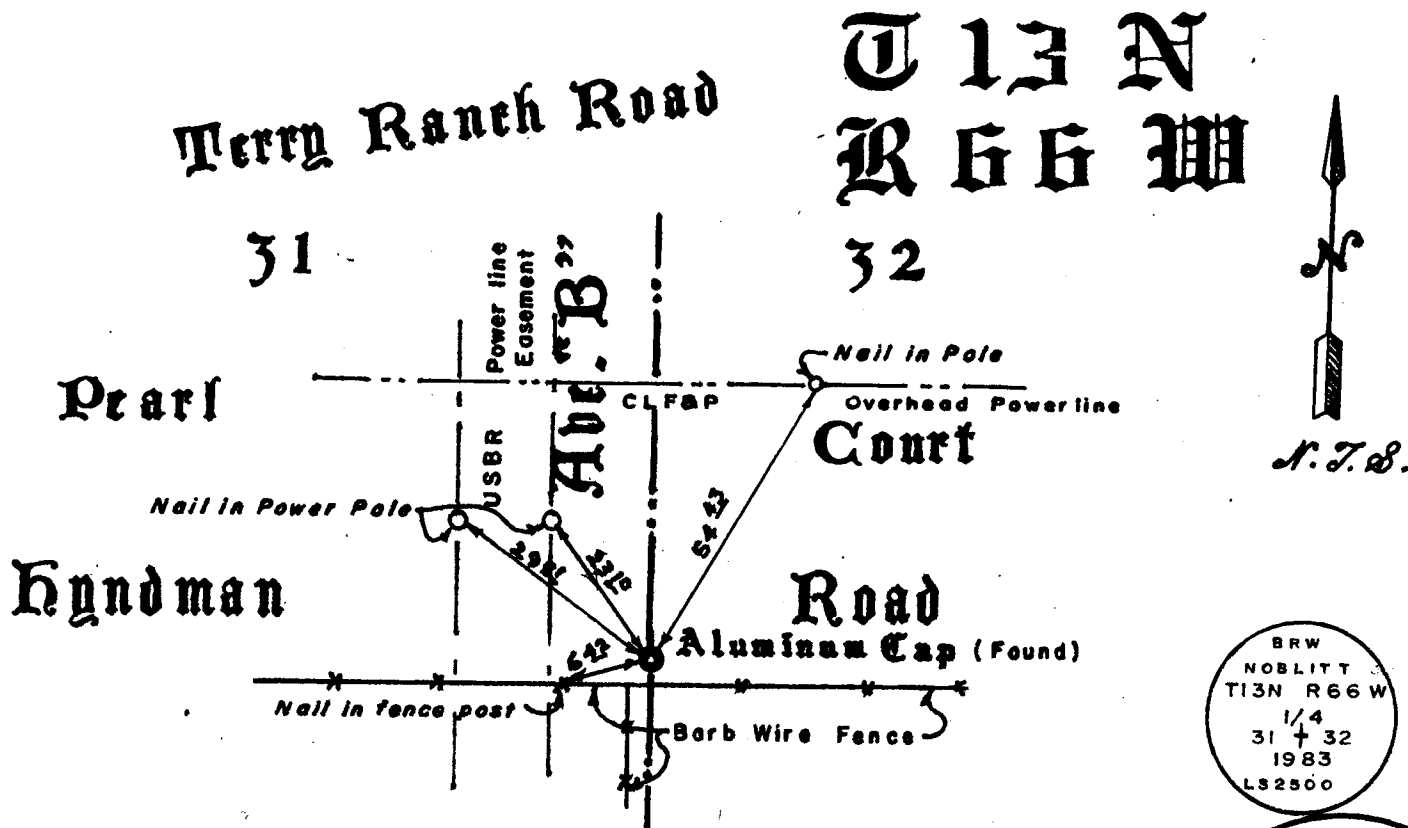
CERTIFIED LAND CORNER RECORDATION

DESCRIPTION OF CORNER EVIDENCE FOUND, AND ORIGINAL RECORD (If known)

1/4 29 1/2 32 GLO Aug 1870 calls for 15X7X5 granite boulder.
Found 1/2 X 24 rebar with aluminum cap marked as shown below.
Corner position established from existing monumentation found in the
Hyndman Homesites subdivision.

DESCRIPTION OF MONUMENT AND ACCESSORIES ESTABLISHED
TO PERPETUATE THE ORIGINAL LOCATION OF THIS CORNER:

SKETCH, WITH COURSE AND DISTANCE TO ADJACENT CORNER IF DETERMINED IN THIS SURVEY.
(May Sketch or Paste Reproduction on Reverse Side.)



BRW
NOBLITT
T13N R66W
1/4
31 + 32
1983
LS2500

Professional Land Surveyor
Larry T. Perry
3047
SS 3047
Registration No.
Date 5/15/89
WYOMING

I, Larry T. Perry L.S. certify that I have carefully performed the survey and done on the diagrammed corner as reported on this recordation form and approve the same.

Larry T. Perry L.S.
Signature of Surveyor

STATE OF WYOMING,
Office of Clerk and Recorder,
County of _____

This "corner record" was filed for record on the _____ day of _____, 19____, was noted on the cross-index plat and is assigned page No. _____, in book No. _____.

James C. Whitehead
County Official

Cross Index No. <u>X-5</u>	T. <u>13</u>	R. <u>66</u>	Mer.
_____	T. _____	R. _____	Mer.
_____	T. _____	R. _____	Mer.
_____	T. _____	R. _____	Mer.
_____	T. _____	R. _____	Mer.
_____	T. _____	R. _____	Mer.
_____	T. _____	R. _____	Mer.
_____	T. _____	R. _____	Mer.

5 - X
BOOK 1273